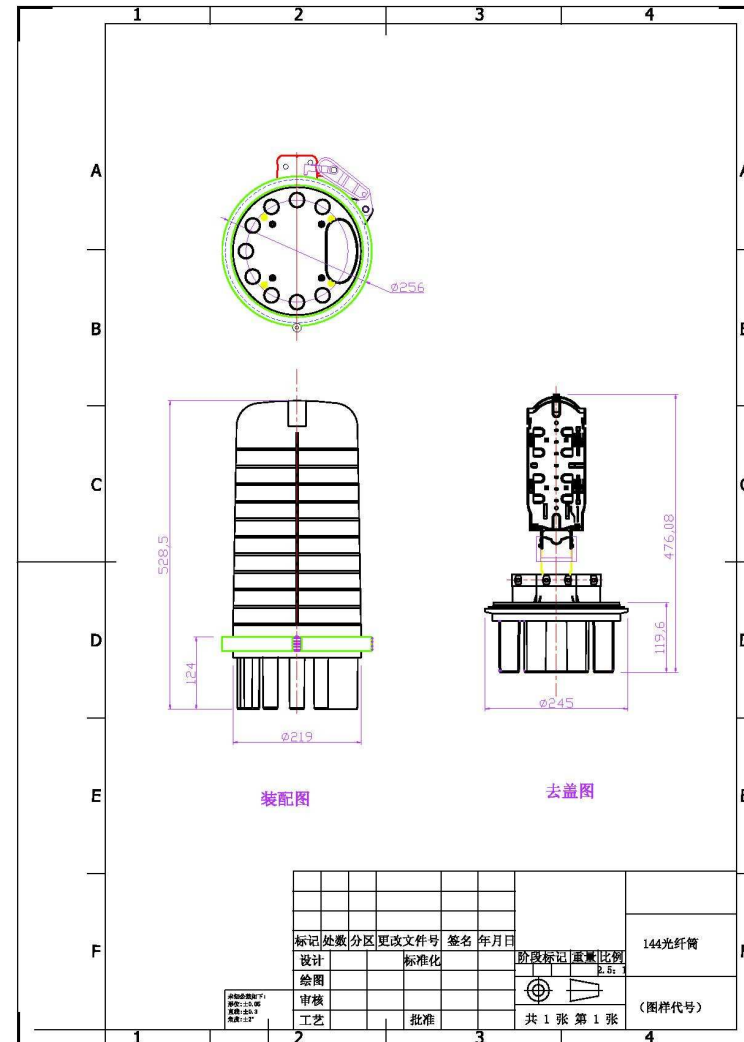


Fiber Optic Splice Closure CWFOC1024-PLC144C

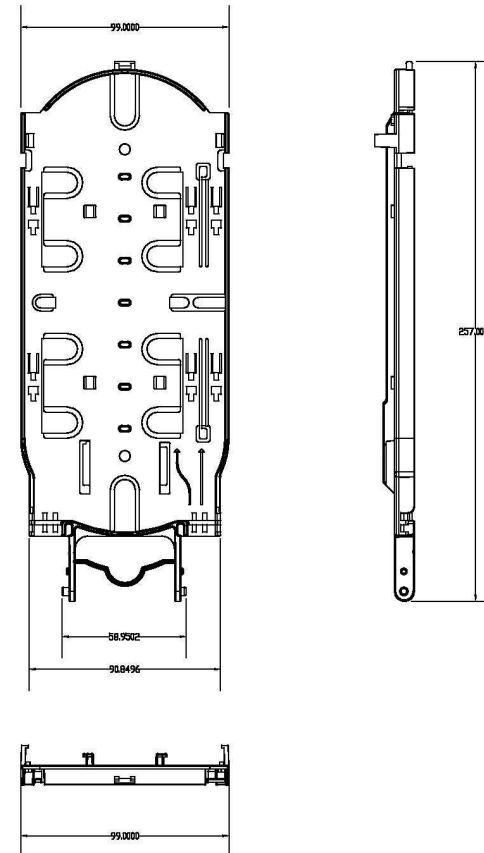
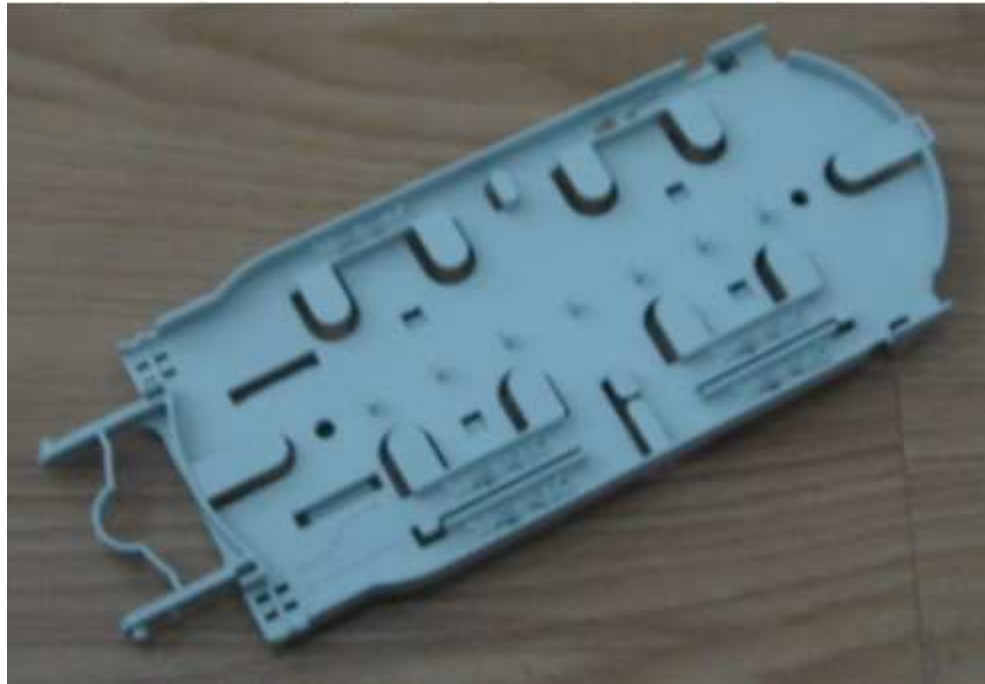
FIBER OPTIC SPLICE CLOSURE 144 Core Fusion Splicing/PLC Splitter



The Closure is Heat Shrinkable Type, install 6pcs
 24 Core Splice Tray,
 Total For 24 Core Fusion Splicing
 1 Overall Port, and 9 Small Out Ports For Cable
 Entrance
 Dimension For the Closure: Diameter-220/Height
 528.5 (mm)

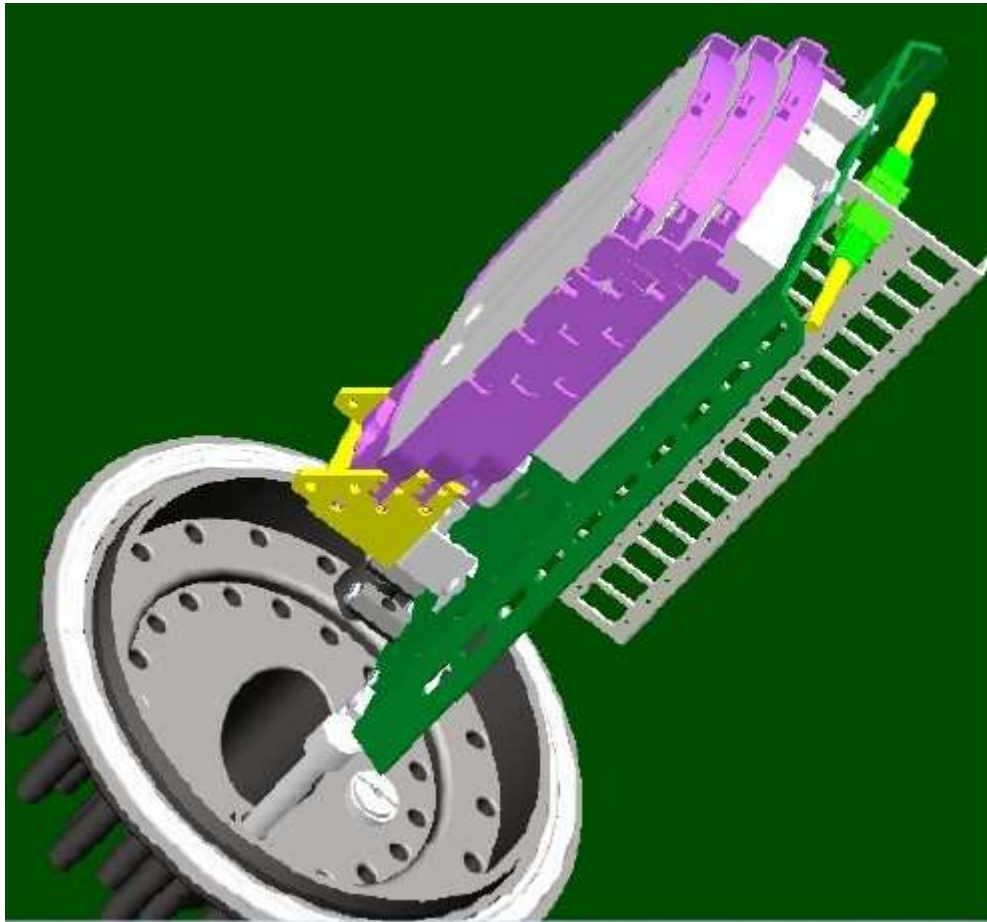


Fiber Optic Splice Closure CWFOC1024-PLC144C

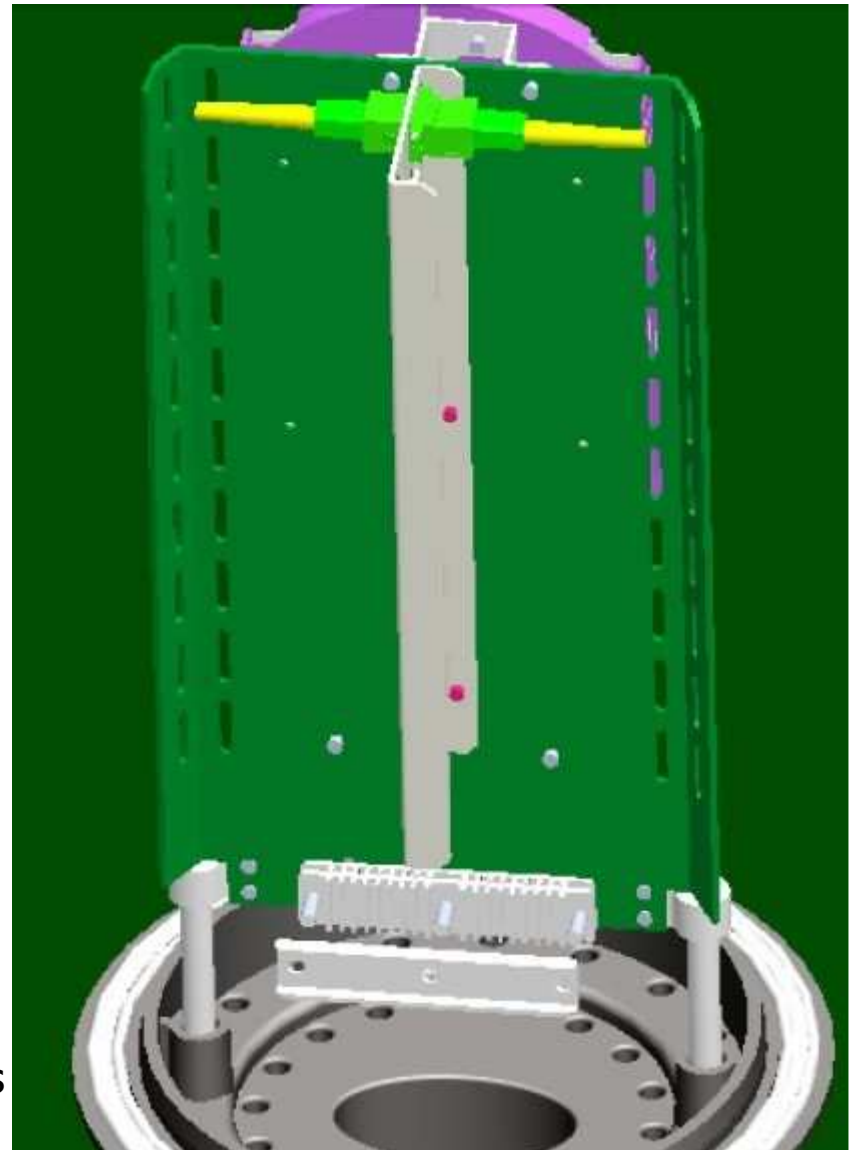


The is 24 Core Splice Tray,24 Core Fusion Splicing Mini PLC Splitter 1*4/1*8/1*16 could be Installed

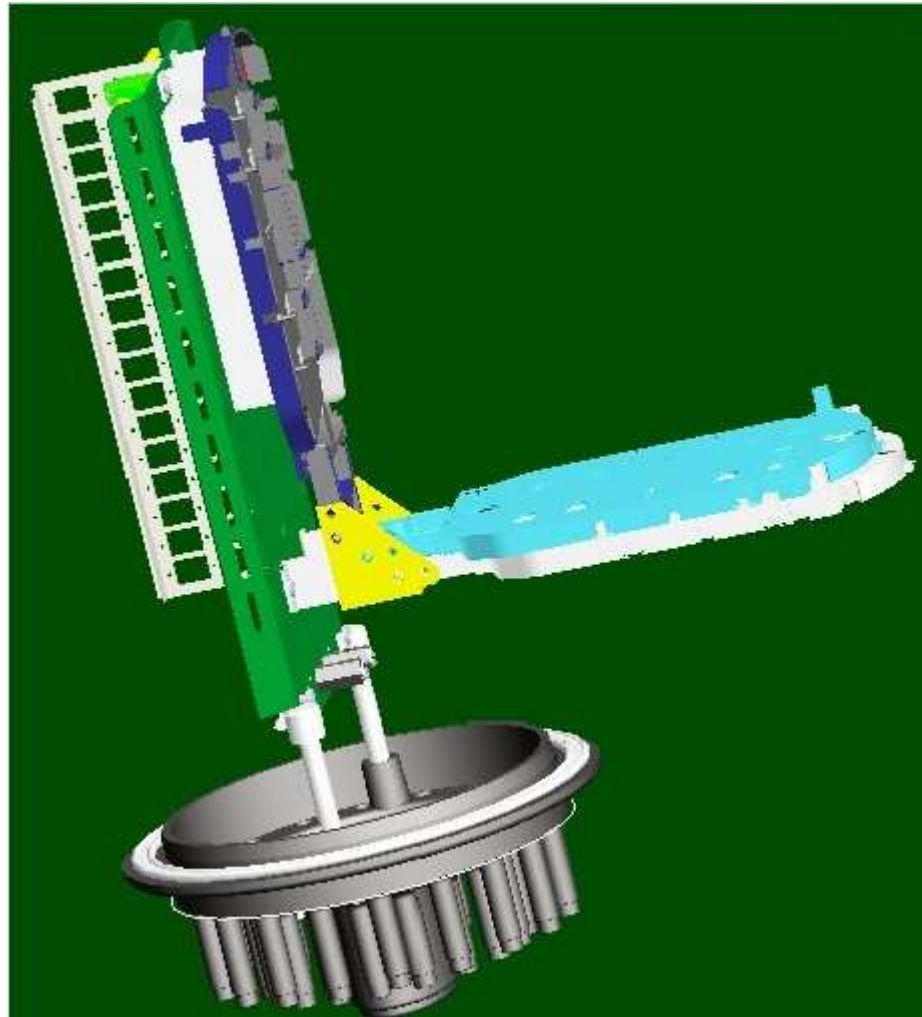
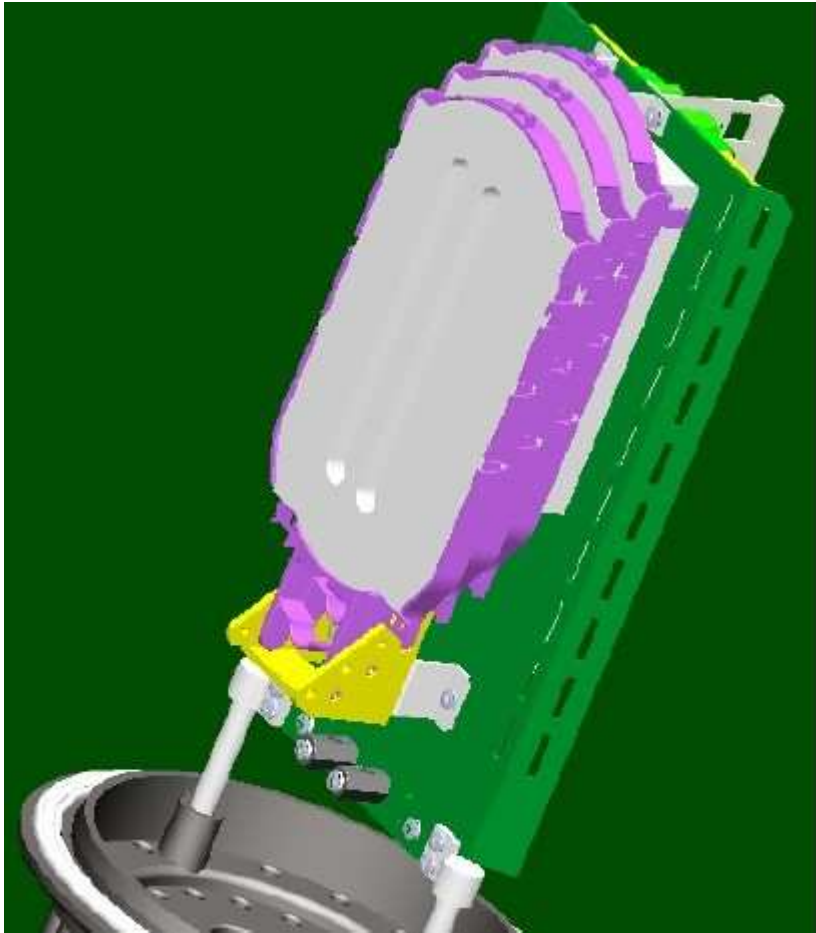
Fiber Optic Splice Closure CWFOC1024-PLC144C



Optional Design: The PLC Splitter Box Could be Installed In Plate, under the Splicing Tray.
Make 32 Ports of Reserved Plate For SC Adapters



Fiber Optic Splice Closure CWFOC1024-PLC144C



Fiber Optic Splice Closure CWFOC1024-PLC144C

