

Fiber Optic Splice Closure CWFOC1006F-16C

FIBER OPTIC SPLICE CLOSURE WITH 16 CORE PLC SPLITTER



Details and Technical Specifications:

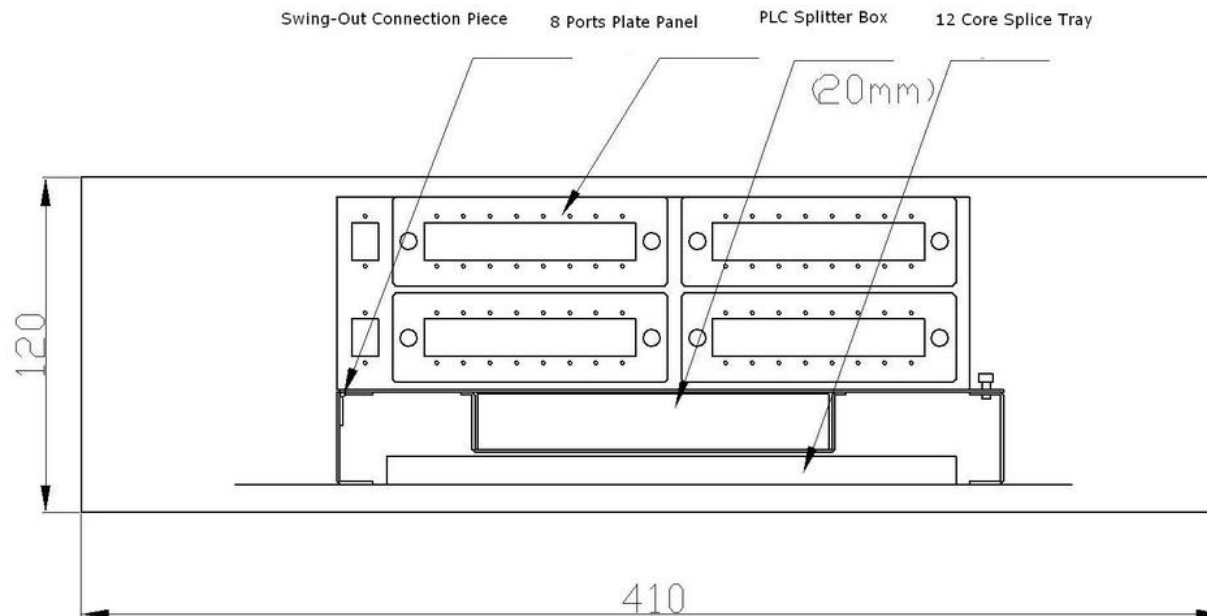
The Closure is mechanical type, install 1pcs 12 Core Splice Tray,
And 1pcs 1*16 PLC Splitter, and 16 Ports+2 Reserved Plate For
SC/PC Adapters.

2 Outlets in each side For Cable Entrance.

Diemnsion:410*200*120 (mm)

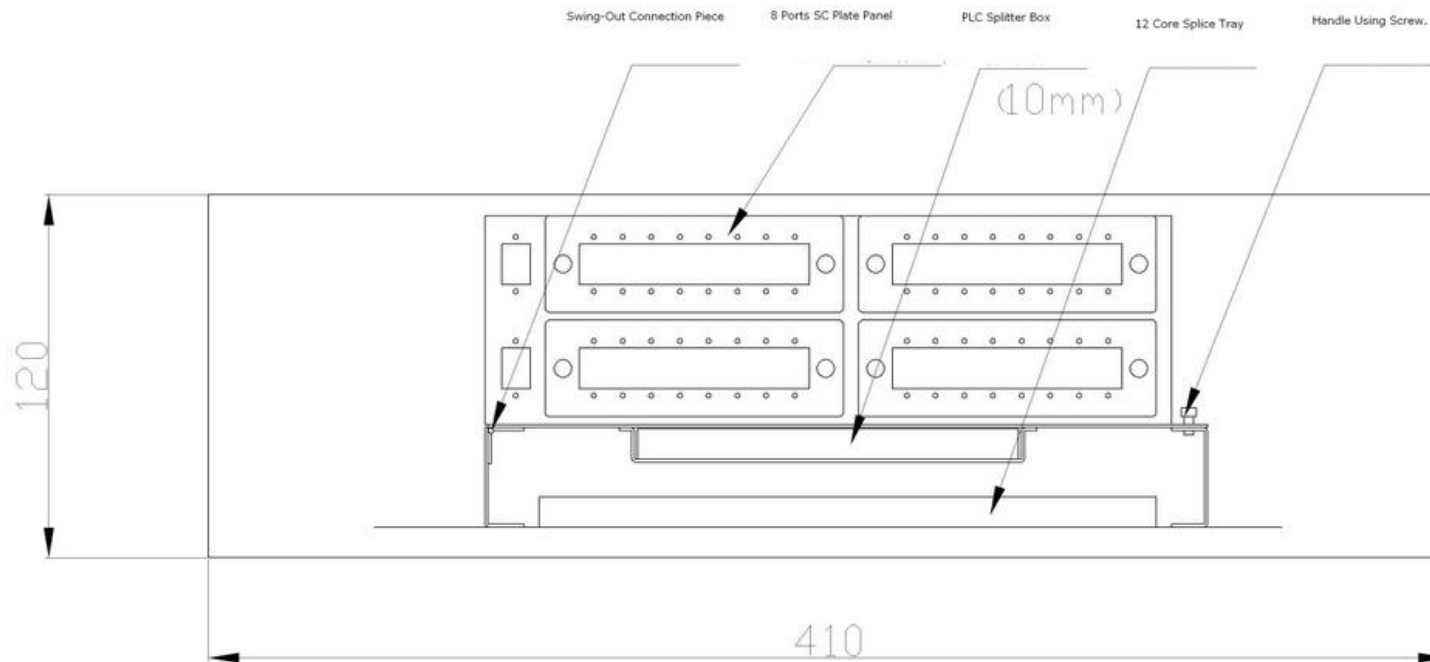
Fiber Optic Splice Closure CWFOC1006F-32C

Drawing For the Closure(with the PLC Splitter and Plate)



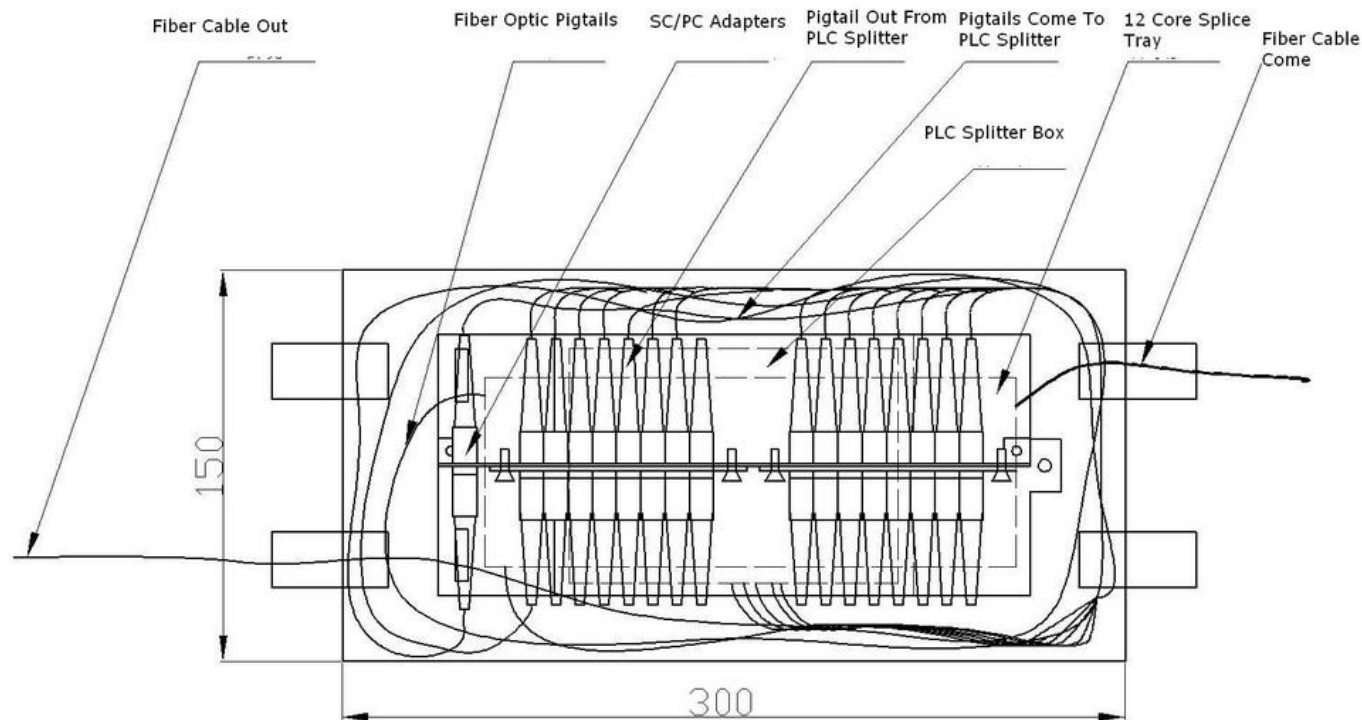
Fiber Optic Splice Closure CWFOC1006F-32C

Drawing For the Closure(with the PLC Splitter and Plate)



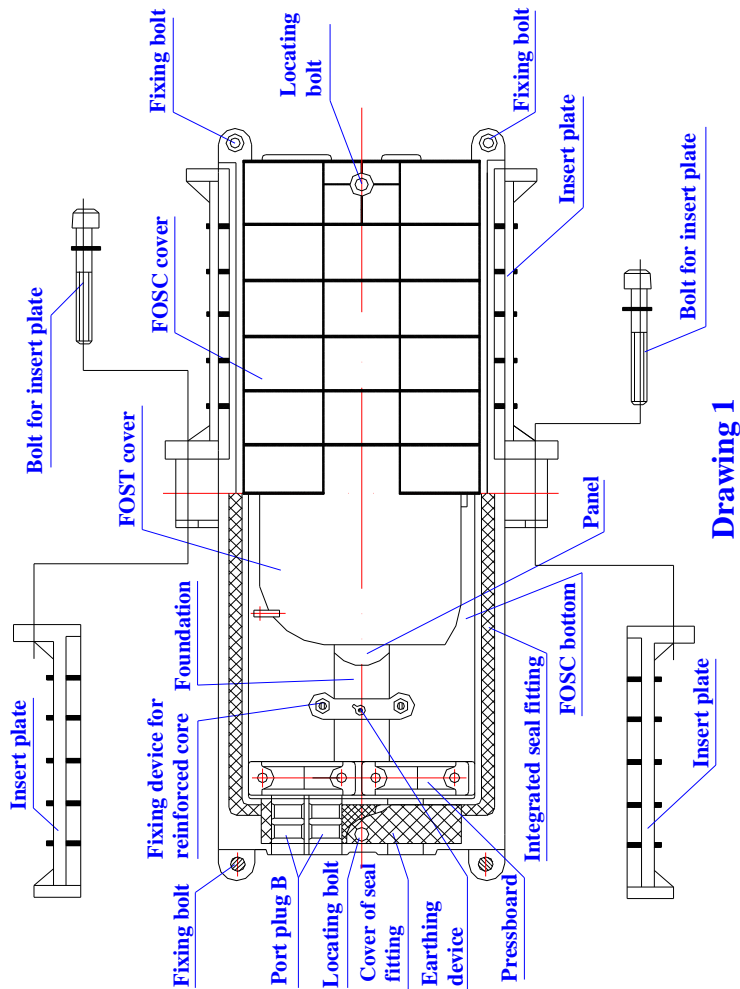
Fiber Optic Splice Closure CWFOC1006F-32C

Drawing For the Closure(with the PLC Splitter and Plate)

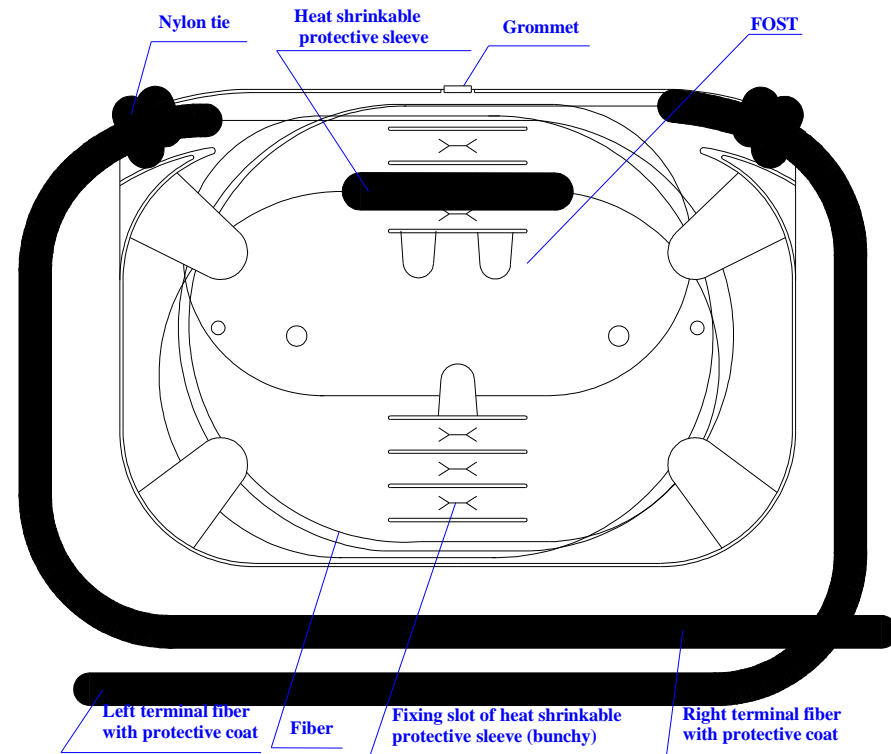


Fiber Optic Splice Closure CWFOC1006F-32C

Drawing For the Closure(without the PLC Splitter and Plate)



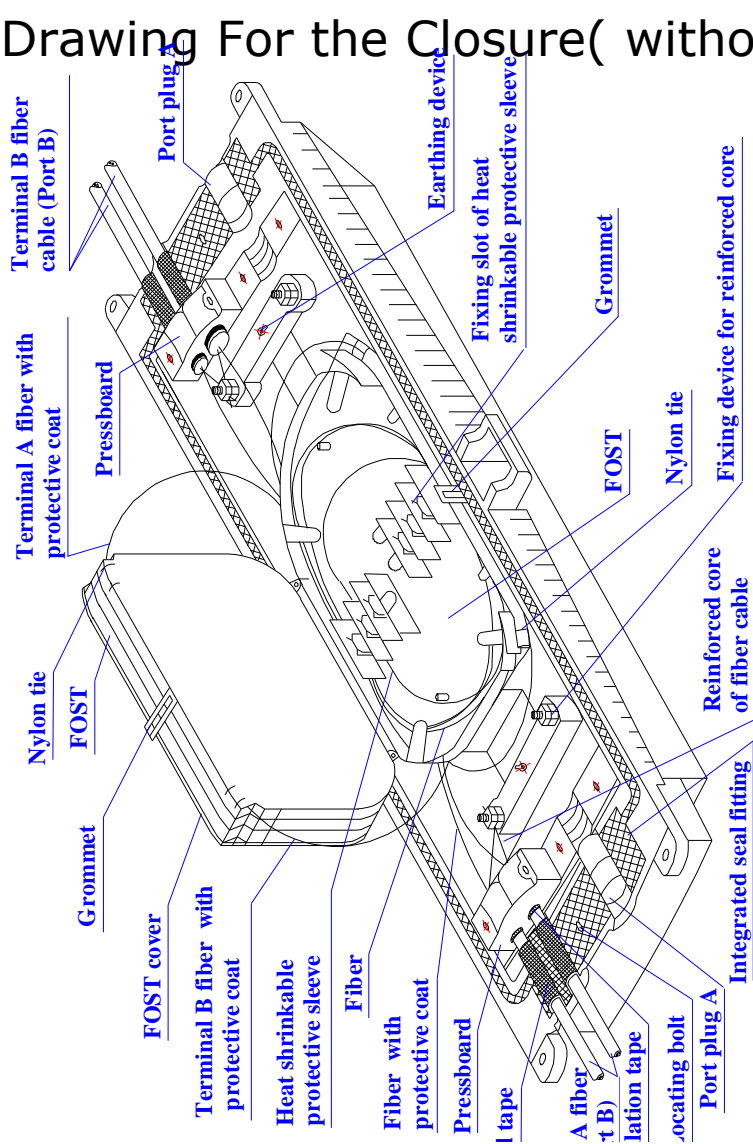
Drawing 1



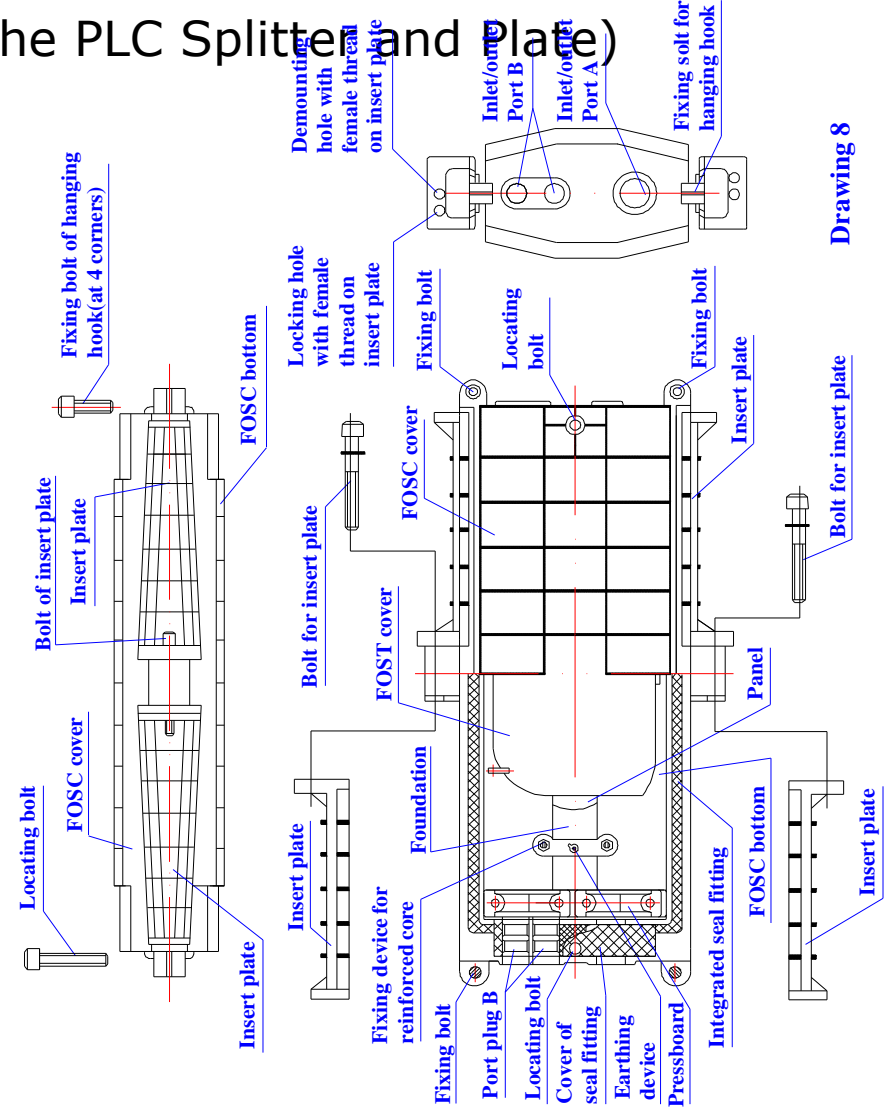
Drawing 6

Fiber Optic Splice Closure CWFOC1006F-32C

Drawing For the Closure(without the PLC Splitter and Plate)



Drawing 7



Drawing 8