

## Fiber Distribution Hub, Outdoor Fiber Distribution Hub CWFDH-48C

FIBER Distribution Hub CWFDH-48C is used in Small Area for Fiber Cable Enlarge



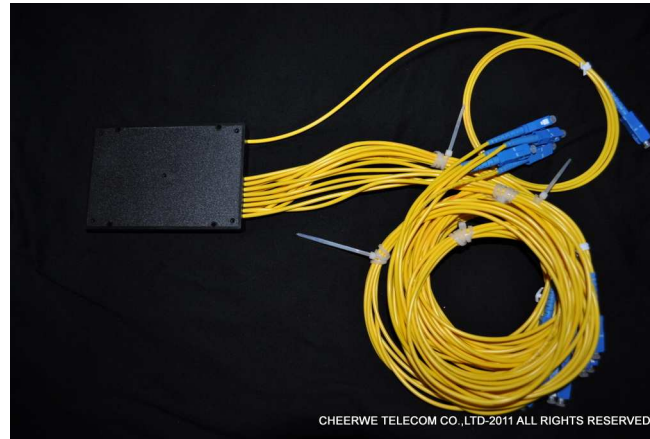
### Details and Technical Specifications:

The Fiber Distribution Hub CWFDH-48C is used in small areas Fiber Cable Enlarged. Depends to our experiences to Build FTTx Network, we need use lower costs to run more users.that means we shall use less cores of Fiber cable.

This CWFDH-48C has the Fiber Splice Tray on the Right inside Box.the Fiber Cable Come and Spliced in the Tray,connected to 3pcs 1\*16 PLC Splitter.then the 48pcs Pigtaills on PLC Splitter Connected to the 48pcs SC/PC Adapters,then spliced on the Left tray inside the box,splicing 48 core Fiber Cable, the 48 Core Fiber Cable Out

**Fiber Distribution Hub, Outdoor Fiber Distribution Hub CWFOC1006F-32C**

FIBER Distribution Hub CWFDH-48C is used in Small Area for Fiber Cable Enlarge



Structure For Fiber Distribution Hub CWFDH-48C :

The Fiber Distribution Hub CWFDH-48C has following accessories:

1. 1pcs Outdoor Metal Box.
2. 1-2pcs 12 core Splice Tray on the Right Direct Splicing Enclosure.
3. 3pcs 1\*16 PLC Splitter
4. 48pcs SC/PC SM simplex Adapters
5. 48pcs SC/PC SM Simplex Pigtails.
6. 4pcs 12 Core Splice Tray on the Out Cable Splicing Shelf.

This Fiber Distribution Hub CWFDH-48C enlarge Fiber Cable From 3 Core (or Less)to 48 Core.